



## PLOT 14 (TYPE A1) plans & elevations

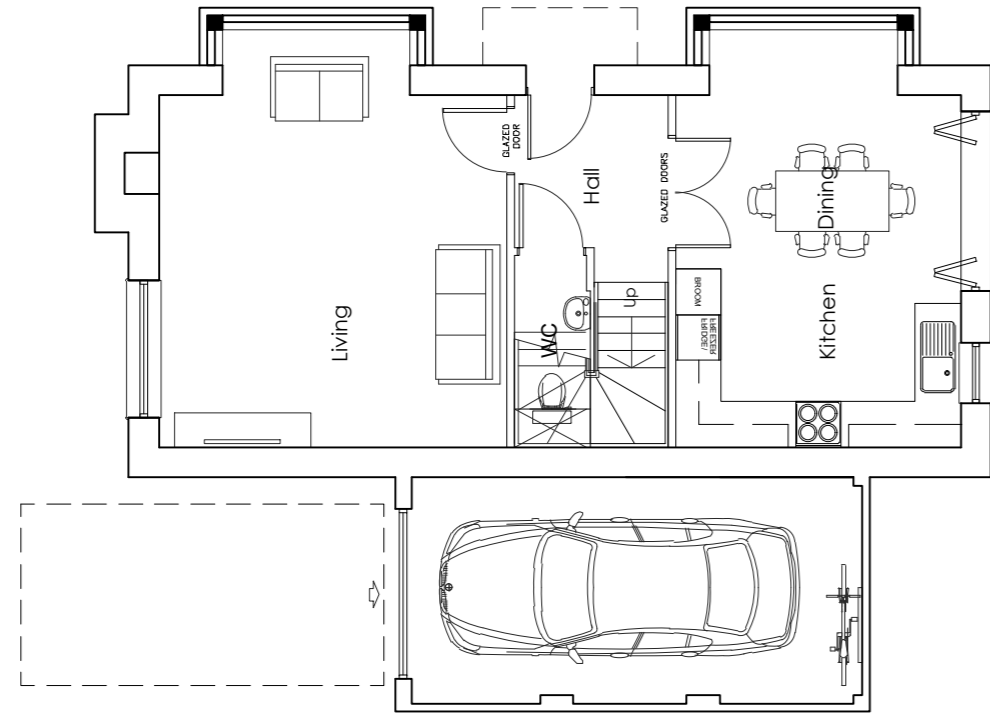
Notes

- This drawing is the copyright of MH Architects Ltd
- Do not scale this drawing except for Local Authority planning purposes
- Any amendments must be checked as site by the contractor prior to commencement of the works.

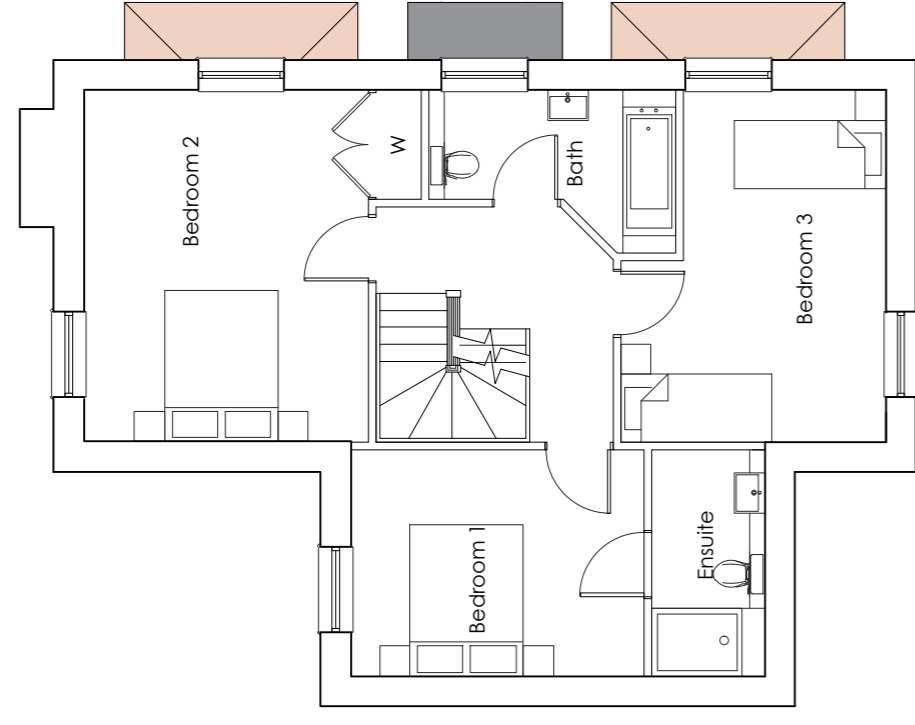
Client Approval

X	A - Approved
X	B - Approved with comments
X	C - Do not use

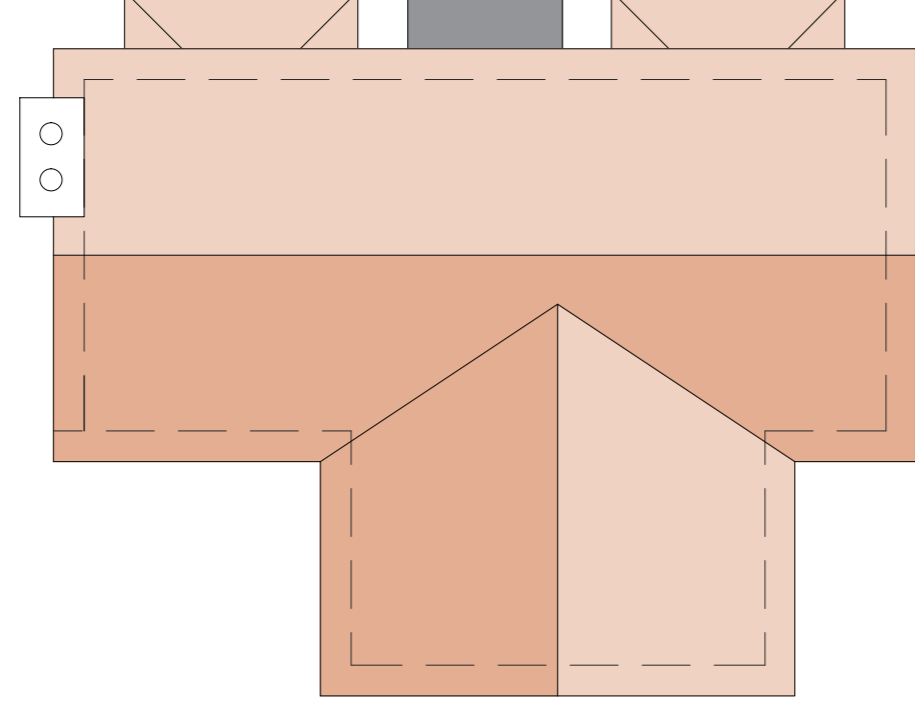
Rev.	Revision Note/Purpose of Issue	Drawn By	Date	Checked By	Date



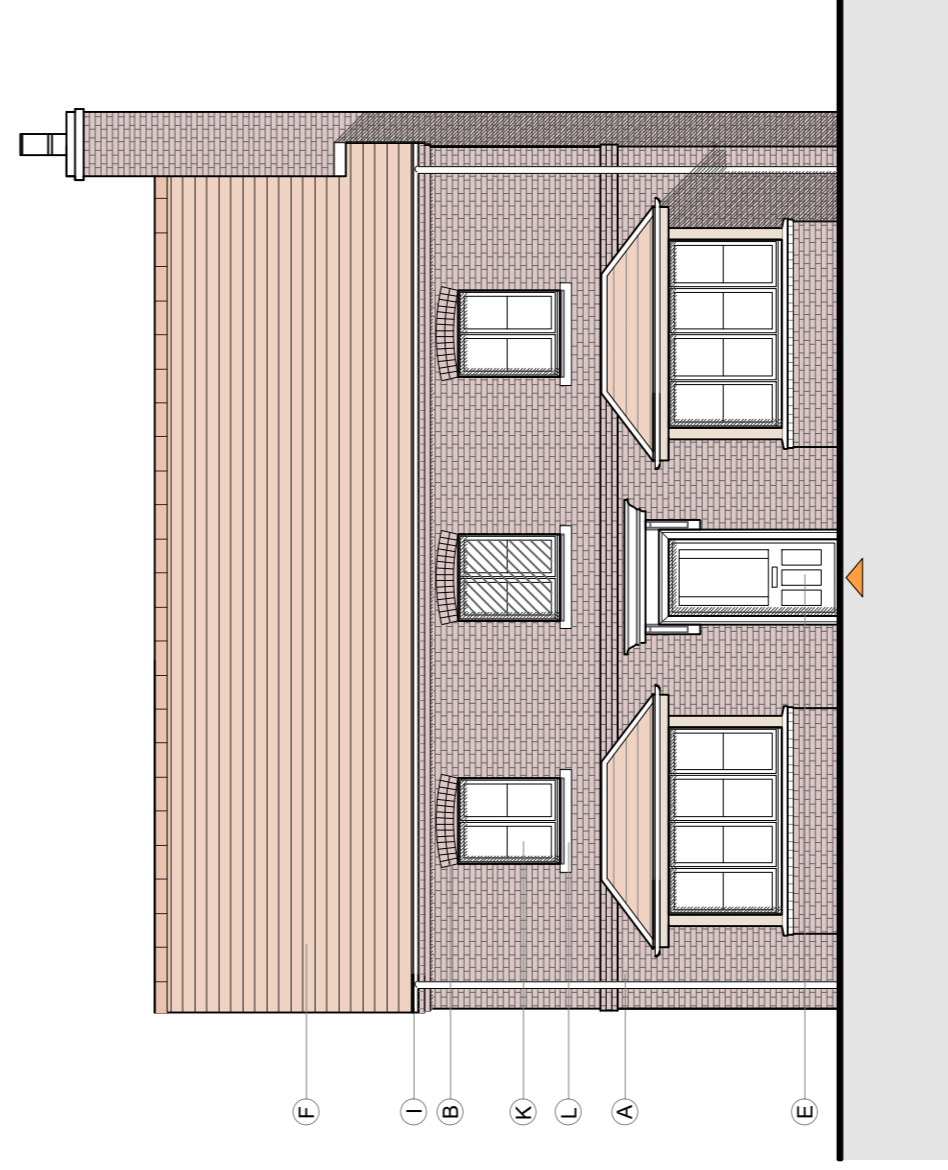
**GROUND**  
floor plan



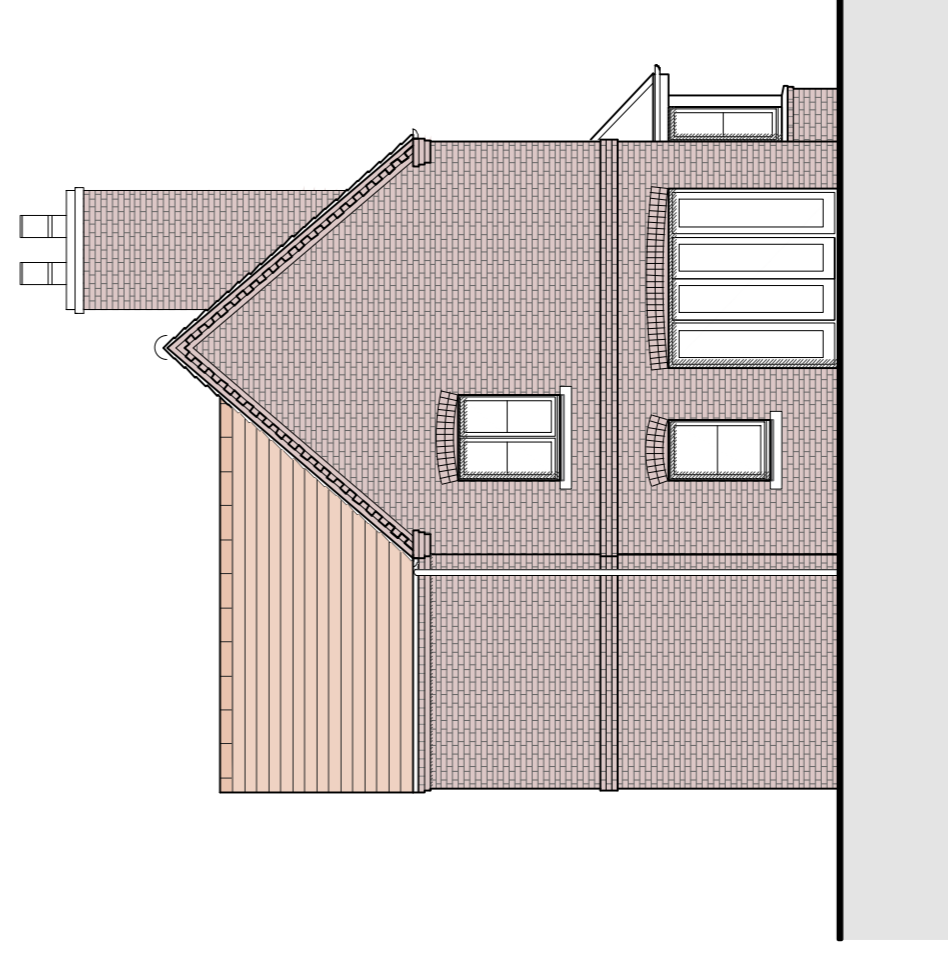
**FIRST**  
floor plan



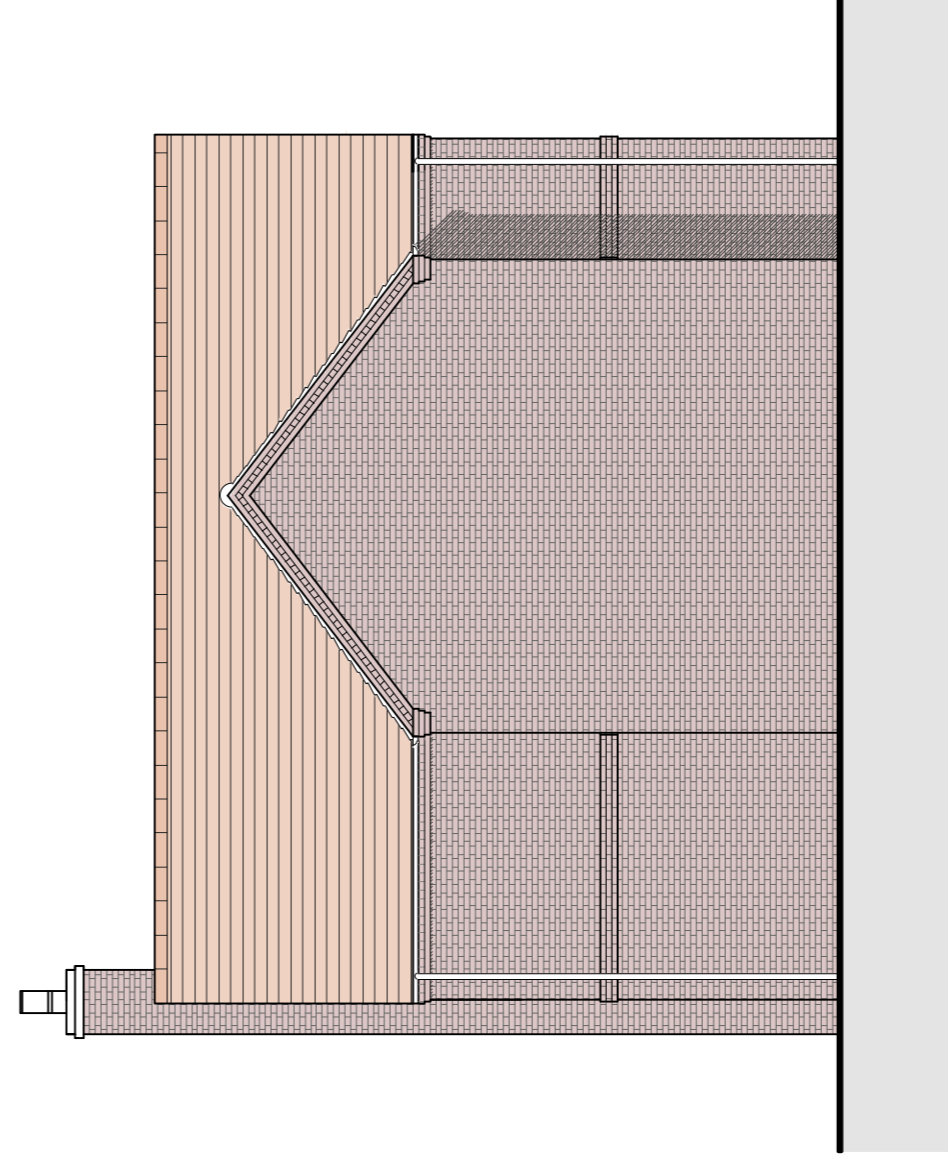
**ROOF**  
plan



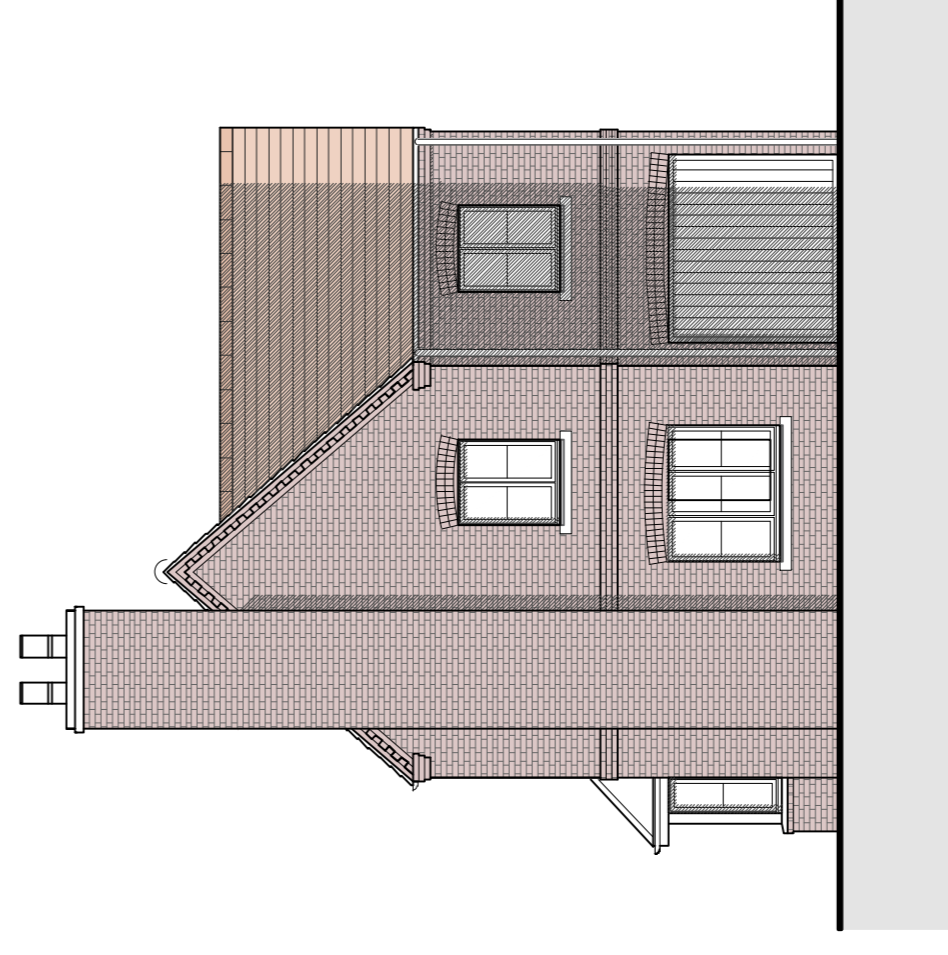
**FRONT**  
elevation



**SIDE**  
elevation



**REAR**  
elevation



**SIDE**  
elevation

Materials Key:

- A. Red multi stock facing brick in Flemish brick bond
- B. Red multi stock flat arch header/ brick detail
- C. Render
- D. Stone header
- E. Stained / Fainted timber entrance door
- F. Natural clay roof tiles/ Clay tile hanging
- G. Natural slate roof
- H. Horizontal timber cladding (timber framed car ports)
- I. Polyester powder coated (PPC) metal rainwater good & soffit
- J. Lead clad dormer with PFC trims
- K. UPVC high performance windows (set back 150mm front face) & rooflights
- L. Buff reconstituted stone window cills
- M. Stone plinth